



# PARTRIDGE LAKE PROPERTY OWNERS ASSOCIATION

PLAKER  
Spring 2017

*A Lake Preservation Group*

## A Lifetime Serving and Defining Partridge Lake

Any present or prior member who is recommended for life membership by the Board of Directors upon the vote of the Association may be given lifetime membership in this association. A life member shall be entitled to all the rights of a regular member except the right to hold office or vote in Association affairs. A life member shall be an ex-officio member of the Board of Directors and may sit on such committees as the President may appoint him/her to.

In the summer of 2016 the PLPOA granted it's first "Life Membership" to 5 members; Billy Ellingwood, Stan Parker, Jr., Dayton Goudie, Jerry Eames, and Florence Fogelin.

We are very appreciative to all of the members to whom we have granted this membership, and we would like to thank them for all their service, advice, and helping to create and preserve the history and the lifestyle of Partridge Lake.



### BILLY ELLINGWOOD

**79 Years at Partridge Lake, since 1937.**

Billy's grandfather, Earl J. Ellingwood, bought their camp in 1925. Bill has been at the lake since he was born, in 1937. The second Ellingwood camp was purchased in 1961 from the Eastmans - David, Holly, and Greg Eastman's grandparents.



### STAN PARKER, JR.

**79 Years at Partridge Lake, since 1937.** Stan's father bought the camp in 1937 when he was 1 year old, from Fred Dodge of Littleton, who owned both that camp and the one that is now the Eames newest camp. Fred gave his daughter the choice of one camp for her and her family. Stan's father (Stan Sr.) was "allowed" to buy the other for \$500.



### DAYTON GOUDIE

**76 Years at Partridge Lake, since 1941.** Dayton's grandfather bought the camp in 1920, and Dayton was born in 1941. Dayton has relayed to us that he remembers there was a summer camp on the Eames property back in the day, and the older kids, like Hal Herrick, Stan Parker, Judy Warden, and maybe Bob Copenhaver, attended in the morning, and the young fellas, Jerre and John Eames, Dayton, and the Poulson boys attended in the afternoon!!



### JERRE EAMES

**74 Years at Partridge Lake.**

Jerre's father bought the camp on October 31, 1931. Jerre was born June 28, 1943, and when released from the hospital went directly to the Camp, named "Jack's Point".



### FLORENCE FOGELIN

**50 Years at Partridge Lake, since 1967.** The Fogelin's bought the Bill and Thelma Green camp, built in 1948, complete with two sets of tiny boys' footprints at the edge of the fireplace!



Summer at Partridge Lake  
Kicks Off with the  
Annual Volunteer Day  
Saturday, June 3, 2017

Contact **Dave Ernsberger** at  
[dave@ePartnerships.net](mailto:dave@ePartnerships.net) or call him at  
(603) 444-7269 or cell (210) 387-4627  
if you want to be part of the Volunteer Crew...  
or just show up at 9:00 a.m. Saturday morning  
in front of the Warden camp.

**It's Your Watershed!  
Get Involved Today!**

# What is a watershed and why does it matter?

A watershed is all the land that drains into a common waterbody, such as a lake, pond, or river. This waterbody is where all the water from precipitation and groundwater not used in other ecological processes eventually collects. You can determine the watershed boundary of a particular waterbody by connecting the points of highest elevation around that waterbody.

## Lake-Friendly Actions

### In Your Home

A septic system digests the wastewater from the household(s) it is connected to. The most common systems consist of a septic tank with a leach field connected to it. The septic tank holds solid waste, while the wastewater flows off into the leach field. The soil around the leach field filters the water.

Nutrients build up in household waste and are dissolved in the wastewater that ends up in the leach field. Those nutrients that do not get filtered out naturally by the soil will eventually drain into groundwater or nearby water bodies, including lakes.

The following practices can help you reduce the amount of phosphorus that flows from your septic system:

- Conserve water
- Use cleaning products containing NO PHOSPHATES
- Be careful what you flush
- Compost your kitchen waste
- Have your septic system pumped regularly
- Have your septic system inspected by a licensed inspector

Courtesy: New Hampshire Lakes Association

## Introduction to Composting Toilets

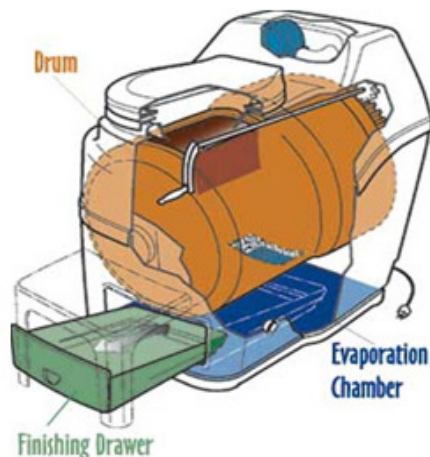
For those with aging or failing septic systems, replacement can be challenging and expensive. One alternative for diverting human waste from a marginal septic system is to install a composting toilet.

Traditional septic systems and flush toilets dilute human waste and create wastewater streams which must be treated before disposal. Human waste entering a toilet is about 90% water, which is then processed within the septic system and released to the ground via the leach field.

Composting toilets accomplish the task a little differently by performing three distinct processes:

- Compost the waste and toilet paper quickly and without odor
- Ensure that the finished compost is safe and easy to handle
- Evaporate the liquid

Water is evaporated and released to the atmosphere through a vent system and the small amount of remaining solid material is converted to useful fertilizing soil by natural decomposition. Composting toilets operate much like the composting system used in home gardens. They accelerate decomposition, and create a manageable, productive waste material. The final product is odorless and dry - similar to fertilizer one might buy in a home and garden store.



The correct balance between oxygen, moisture, heat and organic material is needed to ensure a rich environment for the aerobic bacteria that transforms the waste into fertilizing soil. Proper conditions ensure odor-free operation and complete decomposition of waste.

When human waste is properly composted, the end product does not contain any pathogens or viruses (these are destroyed by naturally occurring bacteria). The nutrient-rich fertilizer can then be used on plants or around the base of trees, as part of the natural re-cycling of nutrients, reducing the need for purchased fertilizers and preserving lake water quality.

Composting toilets are in use in many roadside rest areas and national parks in Sweden, Canada, US, UK and Australia. They are used in rural camps and cottages in Sweden and Finland.

Here are a few purchase and installation considerations:

- **Local laws** – composting toilets are relatively new and unknown. Local regulations may not be updated to include them.
- **Space** – most composting toilets are physically larger than traditional flush toilets.
- **Capacity & Maintenance** – Some toilets will need to be emptied more often than others. Consider the number of people who will use the toilet, and desired service intervals.
- **Power** – Most require electricity to operate the ventilation system.

Nature's Head, ([www.natureshead.net](http://www.natureshead.net)), is one of the highest rated models and is available for about \$1,000. A rebate, similar to what we have in place for septic system replacement, will be proposed at our next PLPOA board meeting.



The PLPOA currently offers a subsidy of up to \$2,500 for the replacement of failed lake-front septic systems.

# Memories of an Eighty Year Old

By Stan & Cathy Parker

Stanley and Peg Parker bought a camp called "Trails End" in 1937, when Stan was a year old, from Fred Dodge. The camp was at the end of the road when it was built. Stan's memories of Partridge Lake in those early years are of endless summer days in his bathing suit playing on the beach and in the water and helping Oney Chaffey haying. The fields ran from the Chaffey house, which was located in the field below the log cabin (the cellar hole for the barn is still visible) to Goudie's camp. Oney also hayed the Trombley field on Partridge Lake Road. Some evenings, Stan's mother would send him up to Oney's to fetch fresh cream that they would separate with a hand-crank separator.

Part of the summer activities were swimming lessons given by Al Bennett, a YMCA instructor who was hired by the Partridge Lake Recreation Association so the kids could get their Red Cross swimming certification. The Eames Family supplied Al with



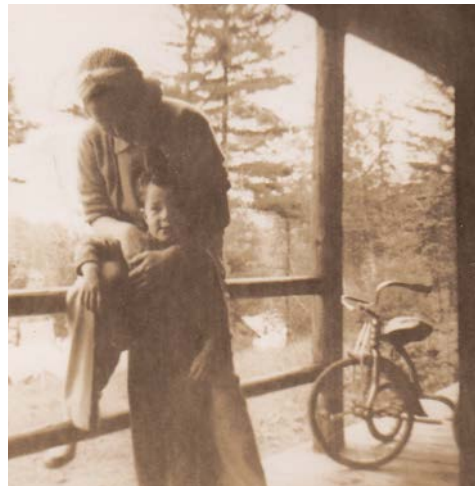
living quarters and the lessons took place on the Eames dock. There were at least a dozen kids involved in the lessons and most of us are still here on the lake.

Local families stayed into the fall and school children would take the school bus from Ellingwood's camp each morning since Dan Ellingwood--Earl, Bill and Danny's father--owned the school buses. He would take the bus out to the camp each evening so transportation was available for the children the next morning. Since most camps were not winterized, none of the summer people lived here in the winter in those days. Sometime in the 1940's, Mrs. Curtis was the first to stay through the winter--with no water or sewage--in the camp now owned by Hutchins. She was the first year-round resident.

**The friendships that were forged at Partridge Lake in those early years have lasted a lifetime and it is a comfort to have such good friends nearby.**



**Early photo of the Parker Family on the front lawn of the camp.**



**Peg with Stan on front porch.**



**Stanley Sr. with Stan on front steps of the camp.**



**Stanley Parker Jr., in front of the Parker camp, ready to go fishing, circa 1939.**

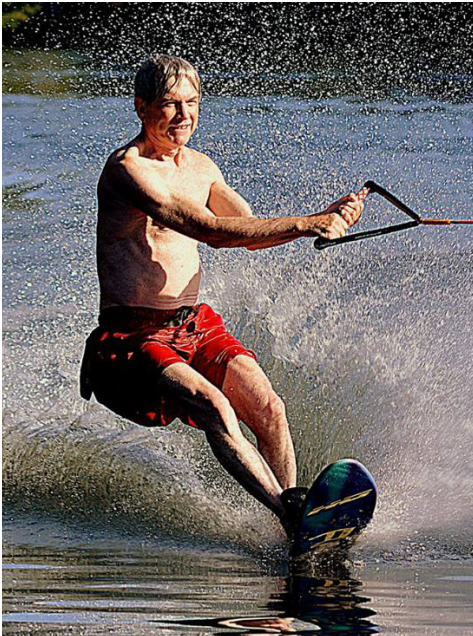


**Stanley Parker Jr. in front of his boathouse, circa 1940.**



**Stanley Parker Sr. and Peg Parker in front of the camp, 1950's.**

A wonderful time was had by all at the  
**Senior Waterskiing Event - Summer 2016**



**Jere Eames**



**Jere was spectacular on just one ski,  
that alone deserves a medal.**



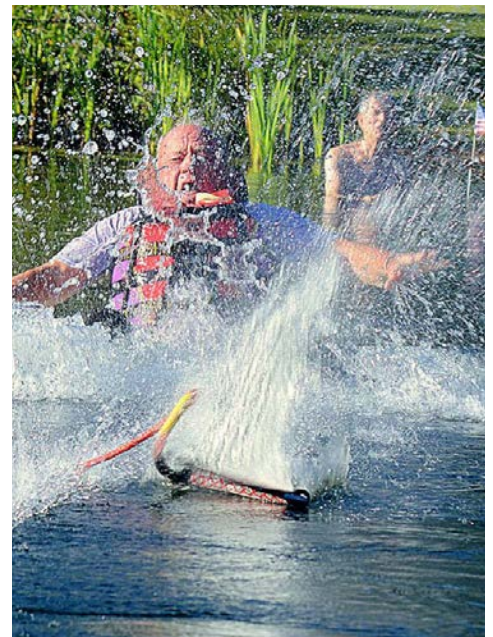
**Albert Howes**



**Cathy Parker  
Oldest Woman Skier**



**Dayton Goudy**

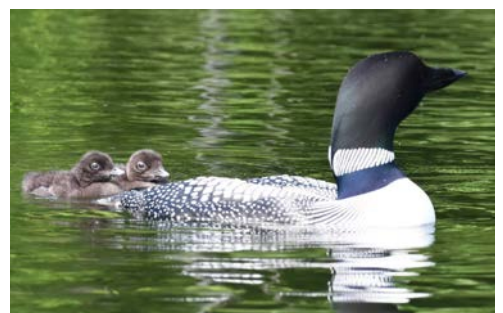


**Stanley Parker Jr.**



**Tennis Anyone?**

Anyone who is interested in joining  
a new Partridge Lake Tennis Group,  
please contact Cathy Parker at  
[ctalotta@yahoo.com](mailto:ctalotta@yahoo.com)



# Kids Korner



There is a special sense of pride and excitement you get when you catch a fish...

By Justin Olson

There is a special sense of pride and excitement you get when you catch a fish, even more so when it's a larger one. It takes more than luck to catch that fish, knowledge and some practical thinking play an important role. You have to figure out where the fish are, what they'll eat, and how deep they are, all by using species, water temperature, weather, time of day and time of year. When I'm not on the water, I'm thinking about what I will do the next time I am there. During winter, when lakes and ponds have frozen over and I can no longer go fishing, it's all I think about. Ice fishing is always an option but that's not nearly as fun and engaging as being able to boat around and seek fish out instead of waiting for them to come to you. I read articles, magazines and even watch a variety of online videos of different techniques and methods on how to catch more large fish of a variety of species. It has become a borderline obsession. **However, fishing to me has become much larger than any simple hobby that an average person just "enjoys."**



In 1997 my grandparents bought a house on a small lake in New Hampshire, within spitting distance of the Moore Reservoir. This became my second home, a place where I was free to do as I pleased and I was more than pleased to fish. It was where I learned to fish, tried new things and caught many species, big and small. This is where the spark was lit, and that fire continues to burn and grow.

Fishing allows me to get in touch with a spiritual connection I feel to my family's past. John Olson, one of my first ancestors to make it to the United States, landed on the shores of the United States at the age of sixteen, coming across the Atlantic ocean from Risor, Norway. He settled in Maine where he became a farmer as well as a fishing guide at the Parmachenee Club, seated on Treat's Island in Parmachenee Lake. It seems fishing has been an interest in my family for generations, John Olson, my great-grandfather, my grandfather, my father, and I all share this common interest. I promise to continue

Grandson of John and Dawnna Aja

passing on my strong appreciation of this privilege we have, not just to my children but also to anyone that may want it.

I believe that in order to preserve our natural resources we must teach new generations about how to appreciate them. I am almost always a catch and release angler only, but whenever I go fishing I make sure to have a copy of the Vermont Fish and Wildlife length requirements in order to be sure if I ever decide I want to keep a fish. These tell me how long a fish must be and what time of year I am allowed to keep certain species. This may also change depending on what body of water on which you are fishing. This allows me

to feel certain that at any point in time, I am always following the laws set in place by the state I am fishing and causing no permanent harm to the area in which I am fishing.

I have come to the decision that in order for me to give back, I must go a step further to protect these natural resources. I want to become a game warden and continue preserving these privileges. I am planning on going to college in order to pursue this career path. I even ended up attending Burlington Technical Center for my junior and senior year of high school for a Criminal Justice program. Hopefully, this will be just what I need in order to point me in a suitable direction and further my education towards an effective career in the outdoors.

**Fishing has brought me full circle, from enjoyment through my childhood and a valuable appreciation of the outdoors, into a career path that gives me something to work towards, a light at the end of the tunnel. My passion for fishing, means a lot more than just being ready to catch a fish. Much of my success and passion for the sport is thanks to the time and many summers spent fishing every corner of Partridge Lake. I shall always treasure the memories, friends and values that have come from my experiences there.**



# Some of Our Memories at Partridge Lake...

By Dylan and Ryan Flewelling

Grandchildren of John and Dawna Aja



Jumping off Meme and Papa's party boat is something that we do often, every time we go to Partridge Lake. The seats are great to dive and do flips off.

We have Scavenger Hunts at Partridge Lake. It is so much fun, especially clues in the water. Partridge Lake is a great place for a scavenger hunt with friends because of all the great places to hide clues.

Sleeping in the cabin is one of the best parts of visiting Meme and Papa. We have the entire cabin to ourselves. When we want to have friends over, we can do some early morning fishing. The cabin is a great place because of all the fish mounts on the walls. They give us extra motivation to go fishing in the morning. There is a "cabin log", it is a really nice way to remember who stayed at the cabin, when, and what the event was. I love looking back at all of the entries.

We always go fishing in the little boat that Meme and Papa have. We catch a lot of fish. We go fishing every day, usually in the morning, then the afternoon, then again at night.

## "FISH STORY"

One day Dylan hooked a huge bass off Randall's dock. We named him Bill the Bass. It broke Dylan's 15 pound test line.

One day we were fishing in the boat, I hooked a tire in the middle of the lake. We towed it back to shore on my fishing rod and when we got to the dock there was a **dead snapping turtle trapped inside.**



## Dawna Aja's Famous Donuts

Hand whip in medium bowl:

1 cup sugar

2 T melted crisco

2 eggs

Add 1/2 of the following dry ingredients and half of the milk. Stir with spoon until incorporated, then add the other remaining dry ingredients and remainder of milk.

Mix ONLY until incorporated.

4 cups SIFTED all purpose flour

4 t. baking powder

1/4 t. salt

1/2 t. cinnamon

1/2 t. nutmeg

1/2 t. mace

1 cup milk

Let set covered with saran in fridge over night.

Use bread flour on board. Roll out to 1/2 inch thick and cut. Fry in CRISCO SHORTENING at 360 - 376 degrees DO NOT HANDLE MORE THAN NECESSARY! Coat with cinnamon and sugar mixture when hot.



This my lake,  
my place to be.

Brianna Olson, age 14

I have had a lot of experiences at this beautiful lake. Some of my favorite memories are my friends from Miami, Pennsylvania, and those that live right at the lake. We have so much fun all summer with crazy parties that my grandparents put on. I am always around to help out getting ready for the parties. There are scavenger hunts; ping pong, badminton, and croquet tournaments. My grandparents are known for their cooking and baking skills that have been passed on to me. If I am not in the kitchen, I'm out with my friends, cruising around the lake and jumping off the boat, or at the Hadwen's camp eating up JoJo's delicious cookies that I can never get enough of.

**A tradition that we love is going on the donut run. We make donuts early in the morning, then we go around in the boat and pass them out to whoever is out on their dock. The Aja's are famous for their donuts. They are so delicious.**

When my cousins Dylan and Ryan come, we each get \$5 to spend at Chutters. I love walking down main street, seeing those painted pianos and all of the different stores. It is truly unique everywhere you go.

My favorite part of the summer is around the 4th of July. Sometimes we light floating lanterns, and watch the fireworks. I love seeing the magical reflections in the water.

**Partridge Lake is my favorite place to be. There will never be a summer without Partridge Lake, and it's all thanks to the beautiful personalities, of the beautiful people, on this beautiful lake. This my lake, my place to be.**

# 2016

## Ladies Night hosted by Reinette Hutchins



Eric and Jodi Fogelin arriving at Partridge Lake in their Murphy Elite Amphibious Floatplane.



Looking to enjoy a day on your bicycle. Ask Glen Hadwin about the Lamoille Valley Rail Trail in Vermont.

Florence Fogelin and son's enjoy time together at the reading from her book, *Once It Stops*, at the NEST in town.

It is with great sadness that we lost two of our long-time residents at Partridge Lake, **Lavinia Savage** and **Bob Fogelin**. With deepest sympathy, our condolences go out to their family and friends. We will miss them dearly.



Lavinia on her 100th Birthday



Lavinia enjoying the 2008 Annual Picnic



Bob Fogelin on the glider at the lake (one of his favorite places in the world!) with wife Florence and his grandchildren.

# Happenings at Partridge Lake Summer 2016 - Annual Picnic Winter 2017 - Winterfest

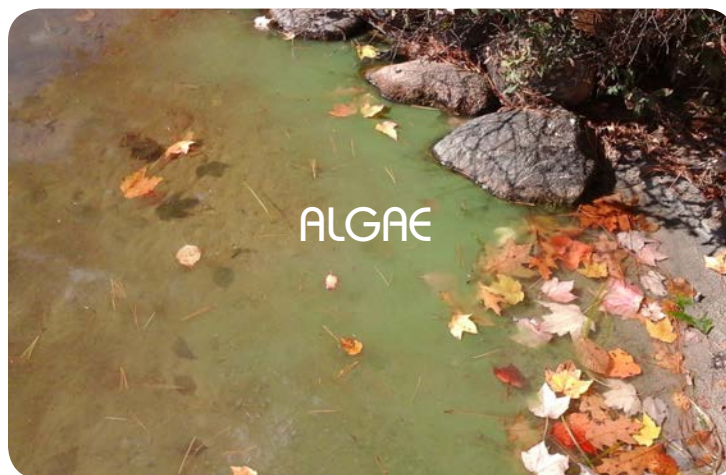


## Polution Control at the Lake

Many of our members are well aware of the work PLPOA does toward protecting our water quality. Some have been involved for many years while others reading this may be new here or have questions. With that in mind, this short summery may be of interest to some.

During the mid-1980's a number of lake residents became concerned about the quality of our lake water. PLPOA stepped forward and took the lead. For a few years we sent lake water samples to a commercial testing company in Manchester and dye tested our septic systems. During that same time period UNH and the State of NH each developed lake monitoring programs. After some research it became clear that we could get more comprehensive results, for less money, and receive better guidance using the State's Volunteer Lake Assessment Program (VLAP.) In 1989 we began driving water samples to the Limnology Lab at DES in Concord. To date we have nearly 30 years of water quality data for our lake.

Early results from our testing showed that **Partridge Lake has a Phosphorous (P) loading problem.** Arrangements were soon made for a diagnostic study of the lake to better understand the problem. For a full year during 2000 and 2001 PLPOA and DES worked together collecting watershed data and in-lake samples. In 2007, after DES staff had compiled and analyzed all the data, we received a Lake and Watershed Diagnostic Study final report. The report includes information about our lake including in-lake and tributary data, a water budget, a phosphorous (P) budget, a trophic classification as well as suggestions for watershed management and lake protection. As a result of these findings we were able to secure Federal EPA funding for a Watershed



**Lurking near the lake bottom is a large slug of Phosphorus that sometimes mixes with the upper water column, feeds algae growth, and degrades our lake.**

Based Plan spelling out a strategy for implementing pollution control measures (especially P reduction.) One recommendation of the Watershed Plan resulted in implementation of a joint PLPOA/ Littleton DPW Road Drainage Improvement Plan. Our Association continues its ongoing work on the education, best management practices, land use and septic recommendations in the Watershed Plan.

**The Plan suggests that after reducing the external (watershed) sources of Phosphorus inputs we move on to addressing internal loading from deep lake sediments. One quote from the Plan is especially instructive as to how important internally loaded Phosphorus is to our problem. Page 2-4 of the Plan states:**

---

**“The actual amount of P released into the water column of the lake from sediments through internal loading is a significant P contributor to Partridge Lake. Through analysis of hypolimnetic (deep water) P concentrations, the average annual internal P load in Partridge Lake was estimated as 70 kg/year (A. Chapman, DES, personal comm.) THIS IS MORE THAN ALL THE EXTERNAL SOURCES TO THE LAKE COMBINED (52.8 kg.)”**

Emphasis provided by D. Goudie

---

It is easy for summer users of the lake to overlook this internal loading. Surface waters, where we do most of our recreating, most often appear clear and healthy. Yet lurking near the lake bottom is a large slug of Phosphorus that sometimes mixes with the upper water column, feeds algae growth, and degrades our lake. This source of Phosphorus demands the attention of PLPOA and NH DES. It is treatable—its effect can be diminished. None of us should allow a fun-filled, sunny afternoon on the lake to lull us in to ignoring the threat below.

## Water Quality Testing

Testing is ongoing. Anyone interested in helping with this process is encouraged to contact **Dayton Goudie** at **(603) 444-2793** or email him at **daytongoudie@gmail.com**.

### Something to keep track of...

Whenever anyone notices the lake level being higher than normal, it would be a good idea to check the outlet dam. Beavers may have moved in! They did! A long handled tool and the current cleaned it up pretty quickly.





## Spotlight on Volunteers

### Board of Directors

Tom Allen *President*

Tom Norris *Vice President*

Paula Berry *Secretary*

Jill Corey *Treasurer*

Jeanne Burdette Jim Hutchins

Megan Carman David Merrill

Tonya Eastman Lisa Morello

Eileen Goodrich Pam Parker

Glen Hadwen Nina Johannessen

Albert Howes Judy Warden

### Ex-officio:

Jerry Eames, Dayton Goudy

### Lake Quality Committee Chair

Dave Ernsberger

Thanks to our 2016 Annual Lake Association Picnic Hosts:


### The Allen Family

Thanks to everyone who provided photos and articles for this issue of the PLPOA newsletter. Your help was greatly appreciated.

If you would like to contribute to future newsletters please contact Jeanne Burdette.



A special thanks to Rob Ellingwood and Joe Giddings for the spectacular 2016 fireworks display. We thank everyone who contributed to this event. It was enjoyed by all.

Connect with us on: 

## Treasures Report

Jill Corey

- As of August 2016, checking account balance was \$1102.97. Sixty out of seventy-five members have paid their dues.
- Expenses incurred were \$160 for water testing.
- Nancy sold another \$210 in clothing.
- The water quality account has a balance of \$33,832.48.
- Donations have been made to the Loon Preservation Society and the N.H. Lake Association.
- Profits from our Ice Out contest helps us buy extra food for the picnic.

**Ticket price for the 2017 Annual Picnic is \$5.00 across the board, under 10 years old will be free.**

*Where else could you have as much fun, eat SO WELL and enjoy each other's company? For only \$5.00!*

Thank you to all who helped, cook, collect dues, sell merchandise, set-up, clean up and collect tickets in 2016! Many hands make light work.

## 2017

### Schedule of Events

**Saturday, June 3, 2017**

Lake Volunteer Day  
Meet at Warden Camp 9:00 a.m.

**Saturday, June 10, 2017**

Spring Board of Directors Meeting  
At Jill Corey's 9:00 a.m.

**Saturday, July 1, 2017**

Annual Lake Association Picnic  
At John & Kerry Schultz 11:30 a.m.

**Saturday, July 22, 2017**

PLPOA Annual Meeting  
*Open to all members! Please join us!*  
At Ernsberger's 9:00 a.m.

**Saturday, August 19, 2017**

End of Summer  
Board of Directors Meeting  
At Jill Corey's 9:00 a.m.

## 3rd Annual "Official Partridge Lake Ice-Out Contest"



**And we have a winner!**

**Mike and Tina Morrison**

Patrick took his plunge at 5:43 am 4/20/17  
Morrison's guess was 2:50 pm 4/19/17

**Thanks to all that participated.**

**We will start selling "Ice Out" tickets for 2018 at the Annual Picnic on Saturday, July 1.**

**Get your tickets early!**

**WEED WATCHERS:** The Partridge Lake Weed Watchers Group will join other volunteers in cleaning up the shoreline on Volunteer Day. We ask that anytime this summer, if anyone sees something growing in the lake that does not look like it belongs, please contact **Nancy, Dayton**, or another Weed Watcher.

We all can help protect our beautiful lake from invasive species. Anyone who would like to join the Elite Weed Watchers group, please contact **Nancy Ernsberger** at [nancyernsberger@gmail.com](mailto:nancyernsberger@gmail.com) or call (603) 444-7269.

**Partridge Lake Merchandise:** As we look forward to summer in Littleton and to the activities on and around Partridge Lake, one of the ways to show your support to the PLPOA is to purchase some of the items we have for sale. **Nancy Ernsberger** will be selling PLPOA merchandise throughout the summer.